

Fluid Damped Single Point Load Cell



FEATURES

- Capacities 2 - 50kg
- Coated steel or stainless steel construction
- IP66 protection
- 6 wire (sense) circuit
- Suitable for most wash-down applications
- OIML R60 and NTEP approved
- Maximum platform size 400 x 400mm

Model 240 is specifically designed to be used where fast acquisition of a stable load signal is paramount. The model 240's unique fluid damping system allows the load cell to be used in applications that previously required the use of LVDT's or similar types of measuring devices.

The model 240 brings load cell adaptability into check weighing and grading applications.

Approved to OIML R60 and NTEP standards, sealed to IP66 level and available in coated steel or stainless steel, the model 240 is suitable for most wash-down applications.

The two additional sense wires feed back the voltage reaching the load cell. Complete compensation of changes in lead resistance due to temperature change and/or cable extension, is achieved by feeding this voltage into the appropriate electronics.

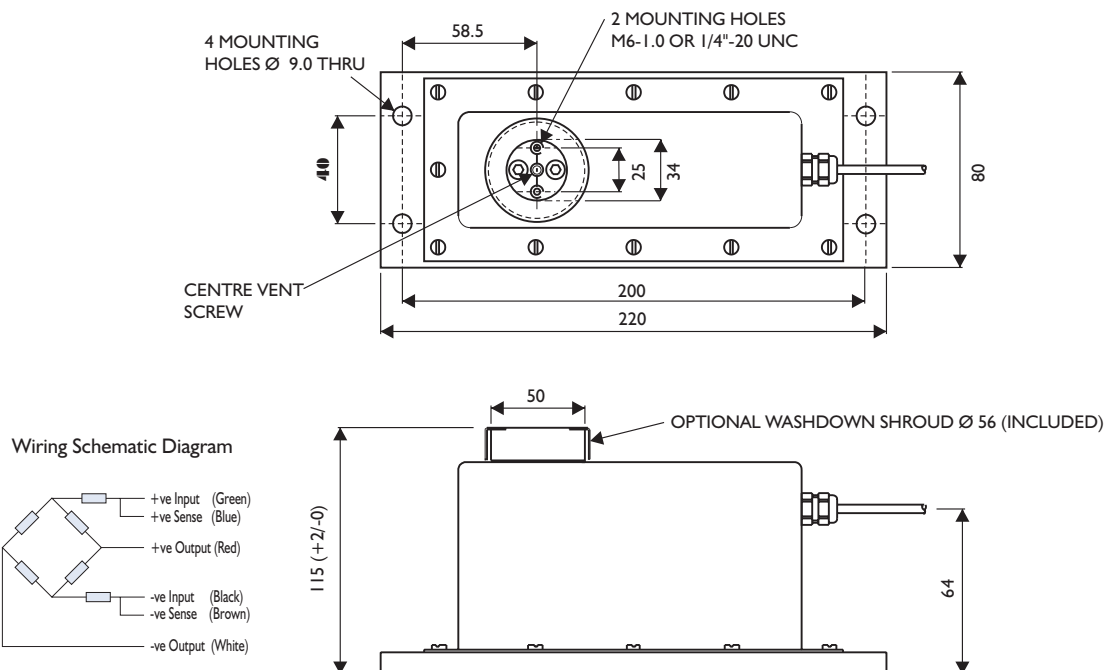
| SPECIFICATIONS | | | | |
|---|--|-----------------------|--------------------------|------------------------|
| GRADE | HSW | | C3** | UNITS |
| Rated Capacities | 2, 3, 5 | 7, 10, 15, 20, 30, 50 | 5, 7, 10, 15, 20, 30, 50 | kg |
| Rated Output | 2.0 ± 10% | | | mV/V |
| Total Error* | 0.050 | 0.025 | 0.020 | ± % of applied load |
| Zero Return after 30 mins | 0.075 | 0.050 | 0.017 | ± % of applied load |
| Temperature Effect: On Output On Zero | N/A | N/A | 0.0010 | ± % of applied load/°C |
| | N/A | N/A | 0.0028 | ± % of rated output/°C |
| Eccentric Loading | N/A | N/A | 0.015 | ± % of rated output |
| Zero Balance | 5.0 | | | ± % of rated output |
| Temperature Range: Operating Compensated | - 30 to + 70 | | | °C |
| | - 10 to + 40 | | | °C |
| Safe Overload | 150‡ | | | % of rated output |
| Ultimate Overload | 300 | | | % of rated output |
| Excitation: Recommended Maximum | 10 | | | Volts AC or DC |
| | 15 | | | Volts AC or DC |
| Input Impedance | 415 ± 15 | | | Ohms |
| Output Impedance | 350 ± 3 | | | Ohms |
| Insulation Impedance | > 1000 | | | MegaOhms |
| Deflection at Rated Capacity | < 0.4 | | | mm |
| Weight (including cables) | 3.7 | | | kg |
| Construction | Coated steel or stainless steel | | | |
| Environmental Protection | IP66 | | | |
| Cable | 3 meters (standard), 6 wire, polyurethane jacket, dual floating screen | | | |

*Total Error - According to OIML R60

**Standard 60% utilization - lower utilization factors available on request

‡This allowance is for accidental overload and should not be incorporated into the working range of the product

Fluid Damped Single Point Load Cell

DIMENSIONS in millimeters**VISHAY TRANSDUCERS (VT) - SALES OFFICE Denmark****Nordic Transducer**

Als Odde DK9560 Hadsund Denmark
 ph.: +45 98581444 - Fax. +45 98581866
 e-mail: ntt@ntt.dk - web: www.ntt.dk