

BS-2

Capacity

150 - 300 - 500 - 750 - 1000 kg

Up to 4000 divisions OIML-R60

Fully stainless steel

Hermetically sealed, fully welded

Protected against humidity IP-68 (EN 60529)

Platform up to 800x800 mm

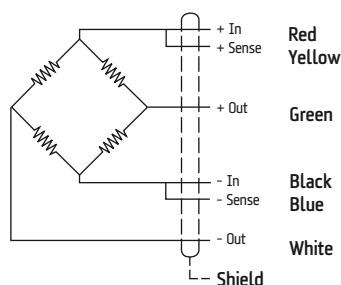
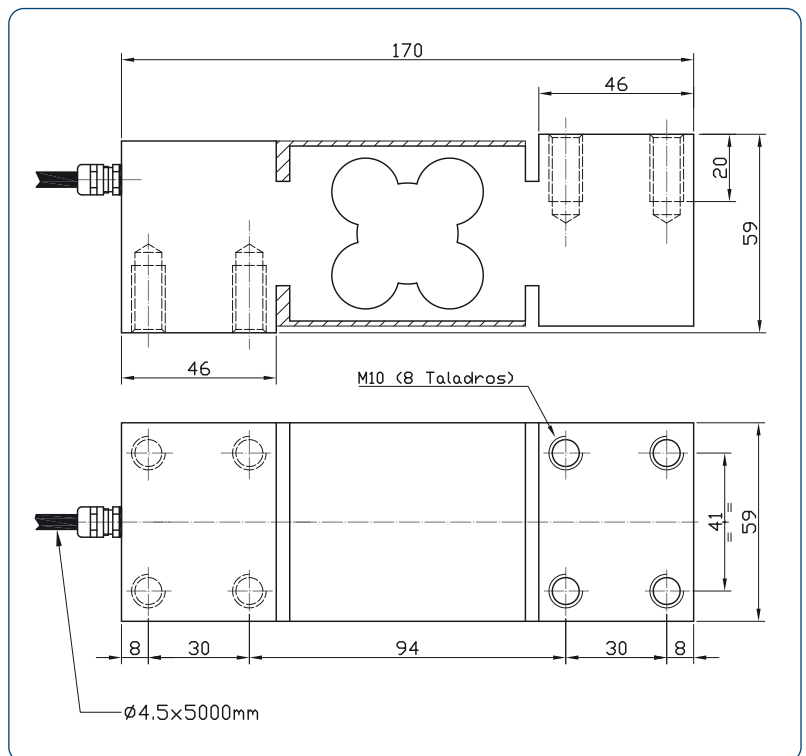
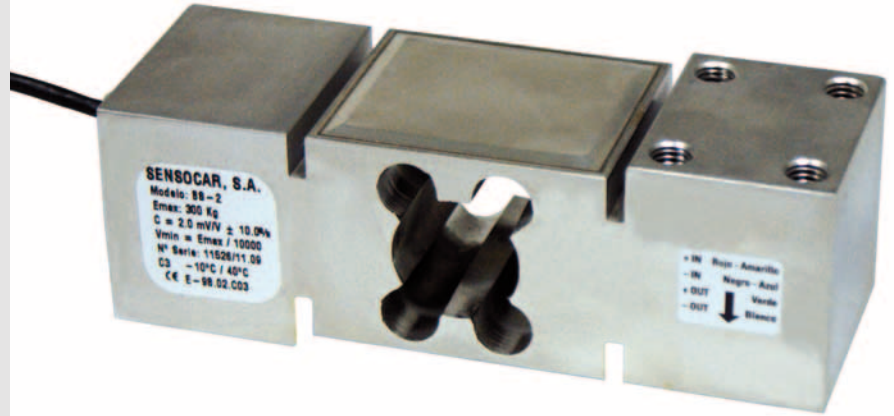
High accuracy with off-center loads

Technical Data

Accuracy class	C3-C4
Rated output	$2 \pm 10\%$ mV/V
Vmin	Emax/10000
Excitation Voltage	5÷15 V
Input Resistance	390 ± 3
Output resistance	350 ± 3
Temperature Compensation	-10° C / +40° C
Temperature Limits	-30° C / +70° C
Insulation resistance	> 5000 M



2019 NEWS !!! NOW IN C6 VERSION



NORDIC TRANSDUCER
DK-9560 Hadsund Denmark
ntt@ntt.dk www.ntt.dk

Connections
Optional Sense