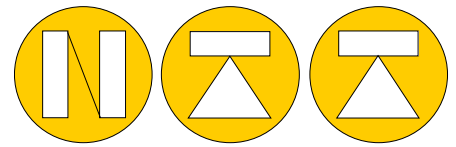




C2S-82 low profile load cell



NORDIC TRANSDUCER

C2S-82-AMP now with amplifier for Industrial outputs as 4-20mA, 0-5Volt or 0-10Volt



C2S-82 with top head & bottom plate



IP68

Capacities from 250kg to 10ton at same size = Ø 82mm !
For perfect usage in:
° Platform scales ° Hopper / Silo weighing ° Other force measuring applications

The C2S-82 is a very low profile hermetical sealed load cell made in stainless steel with IP68 protection grade.

Their compact size makes them ideally suited for applications where space also is limited. Mounting plates and top load heads can be supplied as shown up to 10 ton, or a complete weighing unit **UPC2S** also as shown above (please look at separate information CBS-CM82)

Specification related to 2mV/V model

NOMINAL LOAD	250-500kg-1-2.5-5-7.5-10t	a) minimum load	0%
MINIMUM RANGE	20%	b) service load	120%
COMBINED ERROR	< +/- 0.028%	c) max. permissible load	150%
NON REPEATABILITY	< +/- 0.011%	d) breaking load	>300%
ZERO DRIFT 30 MIN	< +/- 0.028%	e) max. side load	50%
TEMPERATUR EFFECT 10°C		f) max. dynamic load	50%
on zero	< +/- 0.025 %	DISPLACEMENT N.LOAD	0.06mm
on span	< +/- 0.020 %	NOMINAL TEMP. RANGE	- 10/+40 °C
NOMINAL SENSITIVITY +/-0.1%	2mV/Volt	SERVICE TEMP. RANGE	-20/+70 °C
INPUT RESISTANCE	700 Ohm	PROTECTION CLASS	IP68
OUTPUT RESISTANCE	700 Ohm	WEIGHT	1.38 kg
ZERO BALANCE	0.5%	CELL MATERIAL	Stainless steel
SUPPLY VOLTAGE N.10V	2 - 15 Volt	CABLE LENGTH	5 meter

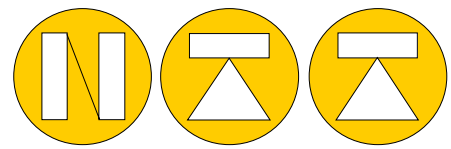
Cable: PVC 105°C Ø6.5mm with 4 tinned conductors Ø 0.35mm² and tinned shield

All specifications subject to change without notice

Nordisk Transducer Teknik

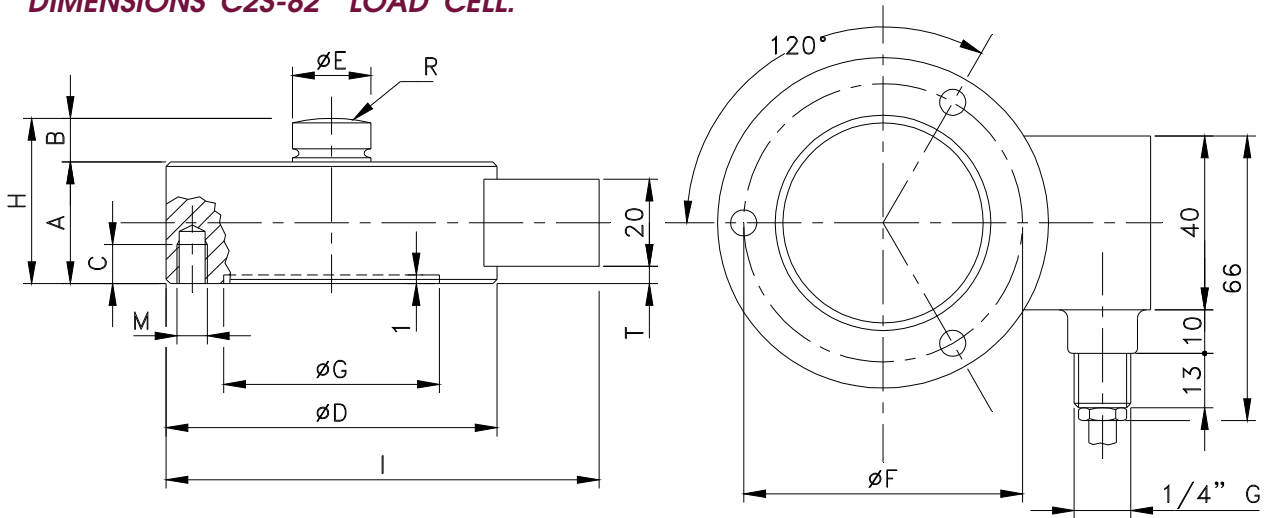


DIMENSIONS : C2S-82



NORDIC TRANSDUCER

DIMENSIONS C2S-82 LOAD CELL:

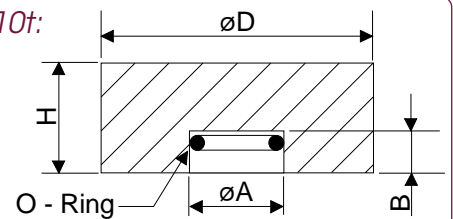


CODE	LOADS	A	B	C	ϕD	ϕE	ϕF	ϕG	H	I	N° HOLES	M	R	T
C2S-82	*X	32	12	10	82	22	68	54.6	44	104	3 XM8	8	50	4

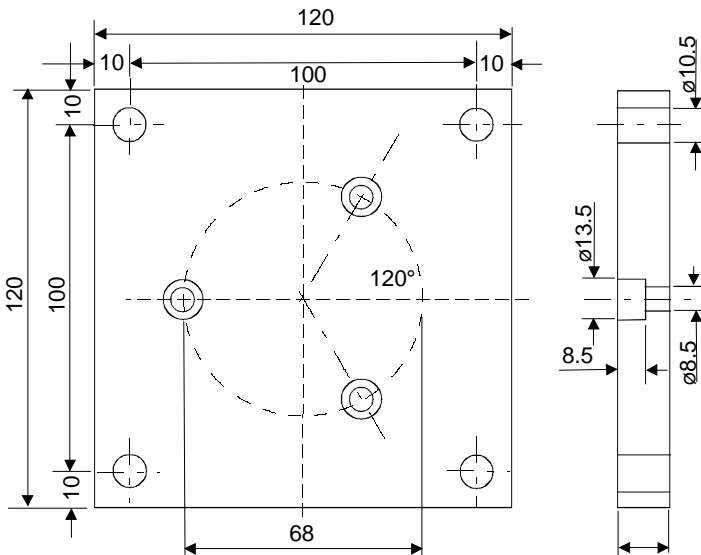
*X = SAME FOR ALL CAPACITIES FROM 250kg to 10t

A top load head can also be supplied for C2S -82 250kg to 10t:

CODE	LOADS	ϕD	H	ϕA	B
TIC22	250kg - 10t	57	24	23	9



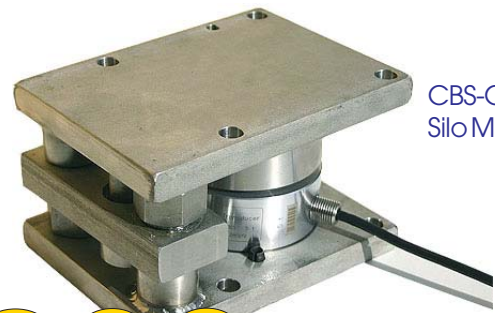
PB120-82 BASE PLATE



LOAD CELL STANDARD CABLE

INPUT+	RED
INPUT-	BLACK
OUTPUT+	WHITE
OUTPUT-	YELLOW
SHIELD	

The use of top Load Heads and mounting plates as shown are recommended for the elimination of the effects of side forces and for smaller non angular forces from "non level" legs and so! For bigger side load will 2-4mm space between top load head and legs/mountings be recommended, or use CBS-SM82 where bigger forces are involved! Please ask for further NTT informations on this!!



CBS-CM82
Silo Mount

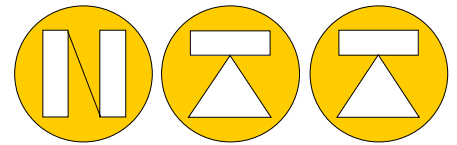


Nordic Transducer

Als Odde, DK-9560 Hadsund Denmark
Ph.: +45 98581444, Fax.: +45 98581866
E-mail: ntt@ntt.dk WEB: www.ntt.dk



C2S-AMP Amplified Load cell



NORDIC TRANSDUCER

INDUSTRIAL STANDARD OUTPUT

4-20mA - 0..5Volt or 0..10Volt all 3wire system

The whole range of **C2S** load cells can now also be supplied with internal amplifier for usage at single cells jobs say for testing jobs and the like, for direct connection to PLC

The accuracy for the AMP model is:

+/- 0.03% Non Linearity,

+/- 0.01% Non Repeatability

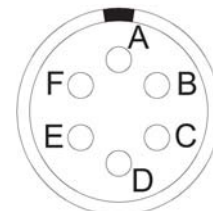
Calibration tolerance is +/-0.1%

Nominal power supply is 12-24Vdc max. 28 Volt

Max. absorption is 30mA (without load applied)

A 5 point test report can also be supplied as a option at order time.

C2S-AMP can be supplied with cable or connector.



LOAD CELL STANDARD CABLE 2mV/V

INPUT+ RED

INPUT- BLACK

OUTPUT+ WHITE

OUTPUT- YELLOW

SHIELD: Not connected to load cell

AMP Mill connector for 4-20mA output:

Power supply 12-24VDC = A (RED)

0V/ -Signal = B (BLACK)

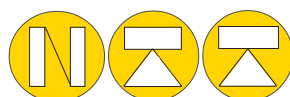
Signal Output + = D (WHITE)

Earth / shield = F connected to Body

Picture seen from soldering side

AMP

If supplied with Connector & mounted with cable, the cable length is 5m as standard.



Nordic Transducer

Als Odde, DK-9560 Hadsund Denmark

tlf. +45 98581444, Fax.: +45 98581866

E-mail: ntt@ntt.dk WEB: www.ntt.dk