

NORDIC TRANSDUCER

Long Distance MS160 Series Draw Wire Position Sensor

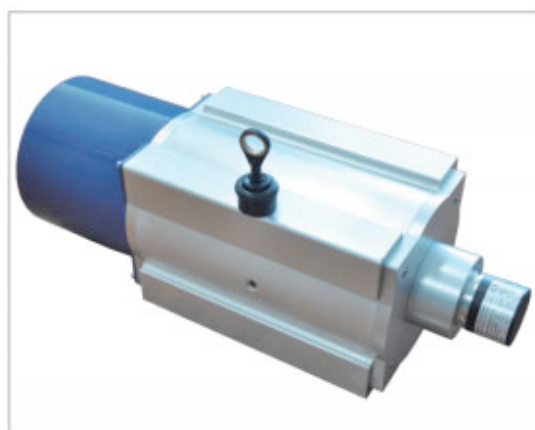
Series **MS160 60M to 100M**

1. output types

- Analogue: potentiometer,0-10V,0-5V,4-20mA
- Digital:TTL/push-pull/OC
- Digital-Absolute:SSI

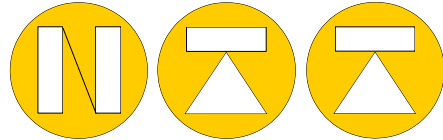
2. Linearity

- Analogue output $\pm 0.12\%$ of FS
- Digital/Digital-absolute $\pm 0.05\%$ of FS



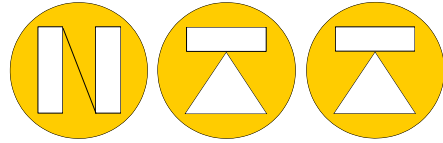
3. Technical data

Output type	Digital	Analogue
Measure Range	60-100m	60-100m
Sensor element	Encoder	Potentiometer
Stainless steel	Ø0.8mm High tenacity wire-rope	Ø 0.8mm High tenacity wire-rope
Output	Open Collect (PNP)	0-5KΩ, 0-10KΩ
	Long Line Driver	4-20mA, 2wire or 4 wire
	Push pull	0-5V,0-10V
Translation circuit	No	Built-in, External, External module
Output zero and output full	No	Adjustable
Linearity	$\pm 0.05\%$ FS	$\pm 0.12\%$ FS
Repeatability	0.01%	0.01%
Resolution(mm)	0.25,0.16,0.05,0.04, etc.	Infinitesimal
Max. Velocity	4000mm/S	4000mm/S
Vibration frequency	50HZ	50HZ
Response frequency	300K Hz	300K Hz



NORDIC TRANSDUCER

Power	Due to output	<1W
Working voltage	5V 5-24V	10-30V, 12V, 24V, 28V
Weight	25kg	25kg
Working temp range	-0C~30C	-0~+30C
Service life	>2Mio	>2Mio
Anti- vibration	10HZ-1500HZ; 10G	10HZ-1500HZ; 10G
Cable length	4M	4M
Housing component	Titanium-anodized Aluminum, the coating is a hart anodic oxidation that protects the sensor from corrosion	Titanium-anodized Aluminum, the coating is a hart anodic oxidation that protects the sensor from corrosion
Protection Class	IP65	IP65



NORDIC TRANSDUCER

