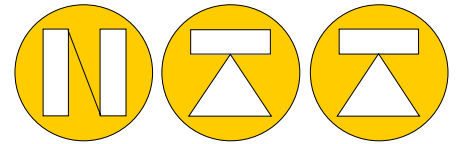


Shear Beam Load Cell



NORDIC TRANSDUCER

Type NTT-SBT10 300kg ...2000kg

Delivered as CC non approved jobs in very Hostile enviroments



Fully Welded IP68 (EN 60529)
 From 300kg to 1000kg
 Laser welded all over ! No potting !
 Special Stainless Steel Cable gland
 5m Special PUR cable

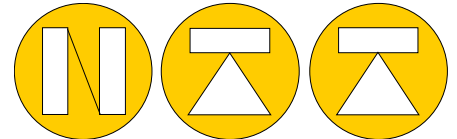
NTT-SBT10 SPECIFICATIONS

| | | | |
|--|---|--------------------------|-----------------|
| NOMINAL LOAD | 300kg, 500kg, 1000kg & 2000kg | | |
| Produced according to: | Class: CC to be used for internal weighing in Hostile Jobs. | | |
| Combined Error | < +/- 0.050% | | |
| Non-Repeatability | < +/- 0.030% | | |
| Zero Drift 30min. | < +/- 0.015% | | |
| TEMPERATURE EFFECT 10°C | | | |
| on zero | < +/- 0.020 %FS/10°C° | | |
| on span | < +/- 0.020 %FS/10°C° | | |
| Operating Temperatur | -30C°.....+70C° | | |
| NOMINAL SENSITIVITY +/-0.1% | 2mV/Volt | a) minimum load | 0% |
| INPUT RESISTANCE | 380 Ohm +/-10 Ohm | b) service load | 120% |
| OUTPUT RESISTANCE | 350 Ohm +/- 3 Ohm | c) max. permissible load | 150% |
| ZERO BALANCE | 1% | d) breaking load | >300% |
| SUPPLY VOLTAGE N.10V | 5 - 15 Volt | e) max. side load | 100% |
| Wiring: Excitation+ Blue Sense + Green Excitation- Black Sense - Gray Output+ White Output- Red | | f) max. dynamic load | 50% |
| | | DISPLACEMENT N.LOAD | 0.3mm |
| | | TEMP. RANGE OIML R60 | - 10/+40 °C |
| | | PROTECTION CLASS | IP68 |
| | | CELL MATERIAL | Stainless Steel |
| | | PUR CABLE Ø 5mm length | 5 meter |
| | | | |

Nordic Transducer

All specifications subject to change without notice

Model: NTT-SBT10

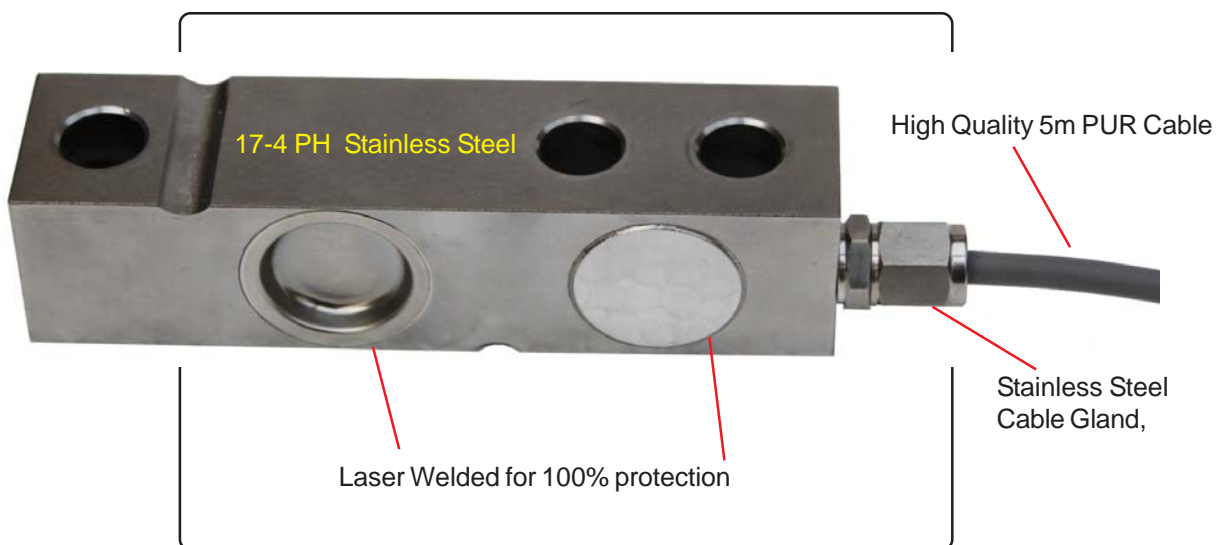


NORDIC TRANSDUCER

Model A -SBT10 provides the weighing industry with the ultimate protection necessary for today's hostile environments in an economical low profile range suitable for platform scale manufacture. Its low profile and all welded sealing combined with high accuracy makes this load cell ideally suited for low profile platforms, pallet truck weighers, tanks and silos. The guide slots incorporated into the upper and lower mounting faces enable manufacturers to easily position the load cell.



Hermetical sealed against moisture, the construction of the model A-SBT10 in combination with a polyurethane dual shielded cable, enables continuous operation in harsh environments whilst maintaining a high operating specification. The two additional sense wires feed back the voltage reaching the load cell. Complete compensation of changes in lead resistance due to temperature change and/or cable extension, is achieved by feeding this voltage into the appropriate electronics



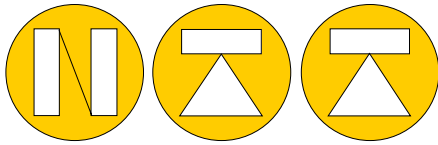
Nordic Transducer

Als Odde, DK-9560 Hadsund Denmark

Tel.: +45 98581444, Fax.: +45 98581866

E-mail: ntt@ntt.dk, WEB: www.ntt.dk

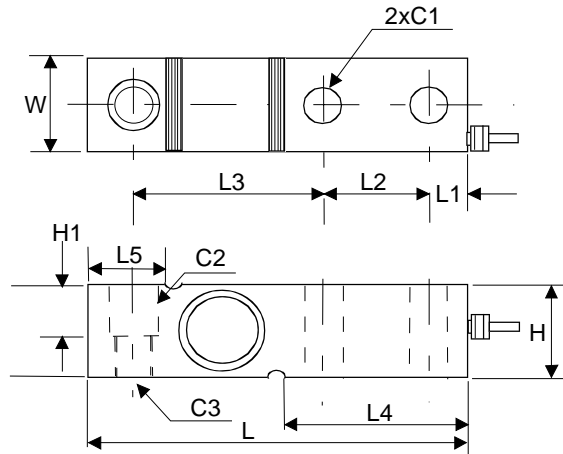
Cable: PVC 105°C Ø5.5mm with 6 tinned conductors Ø 0.35mm² and tinned shield similar as Vishay TH 3510



NORDIC TRANSDUCER



DIMENSIONS NTT-SBT10 300kg 2000kg



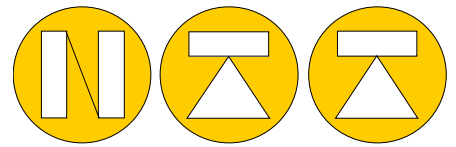
| C1 | C2 | C3 | H | H1 | L | L1 | L2 | L3 | L4 | L5 | W |
|-----|-------|----------|----|----|-----|----|------|------|------|------|----|
| Ø13 | Ø13.5 | M12x1.75 | 32 | 16 | 130 | 19 | 25.4 | 76.2 | 50.5 | 12.6 | 32 |

*Dimensions similar to VTH 3510
& Thame side T85.*

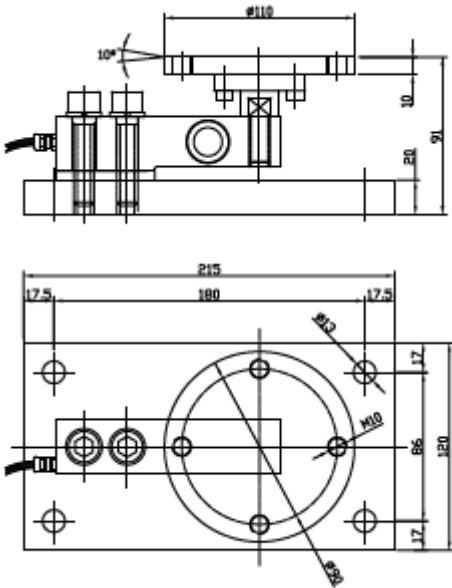
Nordic Transducer

Als Odde, DK-9560 Hadsund Denmark
 Tel.: +45 98581444, Fax.: +45 98581866
 E-mail: ntt@ntt.dk, WEB: www.ntt.dk

Type NTT-SBT10 300kg ...2000kg



NORDIC TRANSDUCER

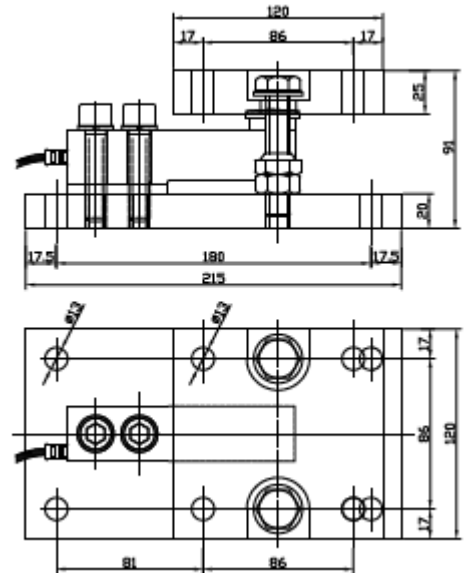
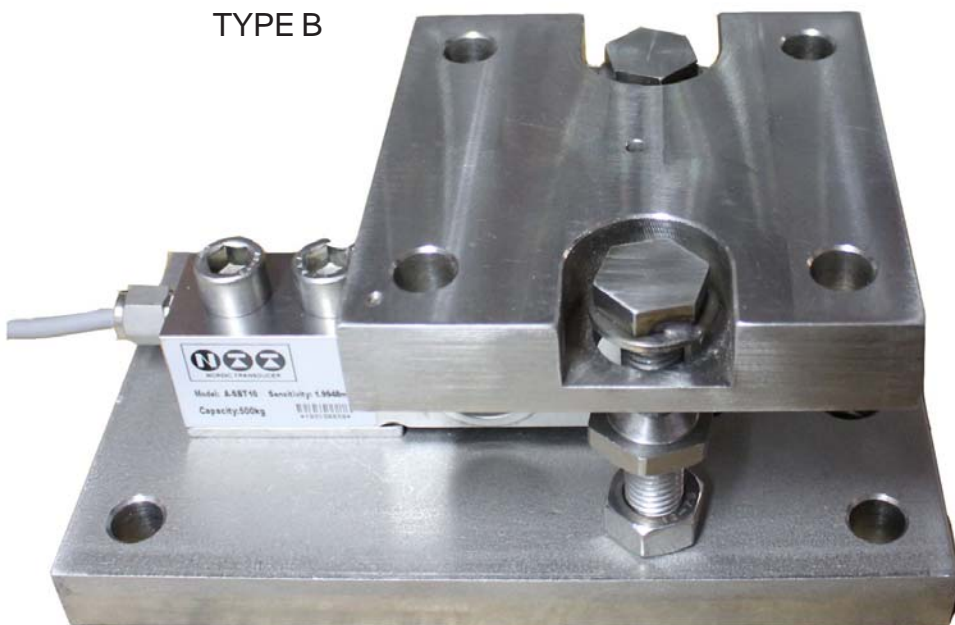


TYPE A



SILO mount for NTT-SBT10 load cells 300kg...2000kg

TYPE B



Nordic Transducer

Als Odde, DK-9560 Hadsund Denmark
Tel.: +45 98581444, Fax.: +45 98581866
E-mail: ntt@ntt.dk, WEB: www.ntt.dk