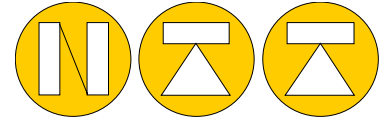




# Inductive Position Transducer SM205 +/-1.5mm & +/-2mm ranges

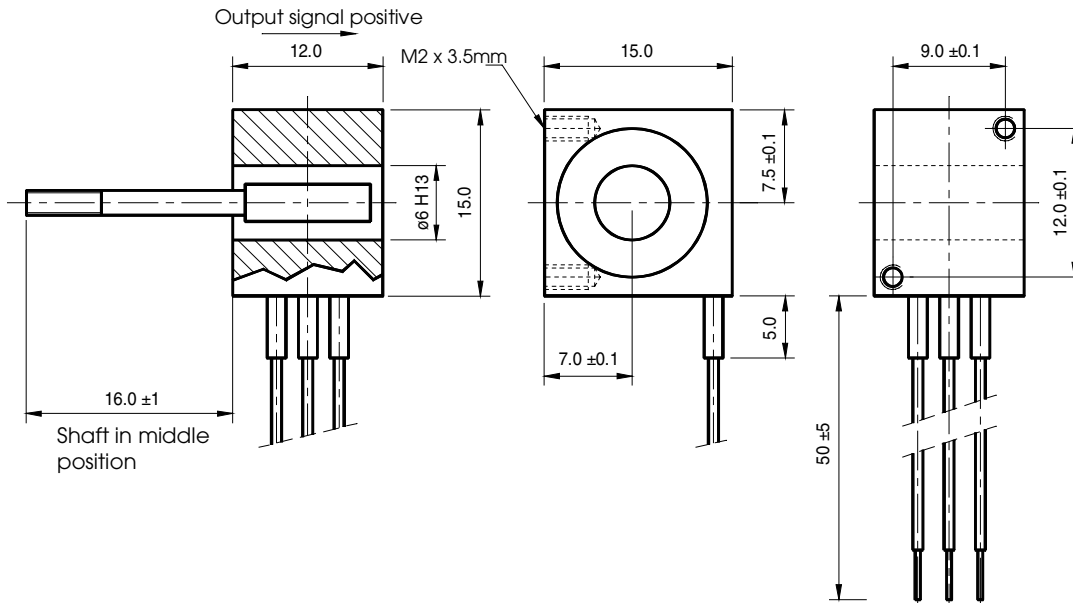


**NORDIC TRANSDUCER**

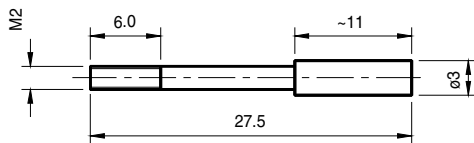


SM205 M2 Thread, +/-1.5mm or +/-2mm working range

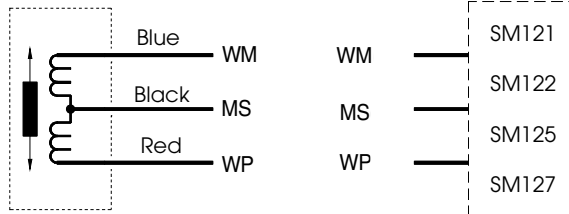
Working range: +/- 1.5mm or +/-2mm  
 Linearity: +/-0.5% (option +/-0.25%)  
 Sensitivity: 240mV/mm +/-10%  
 Wiring: 50mm long 3 wire kynar  
 Plunger: 3mm with M2 thread, brass with chrome on signal part.



Shaft/plunger dimensions:



Connections



Electronic Module



SM120 series electronic excitation modules for SM205 Mini inductive transducer

Order information:

**SM205.3.2**

+/-1.5mm = 3  
 +/-2.0mm = 4  
 2 = 0.5%  
 1 = 0.25%

