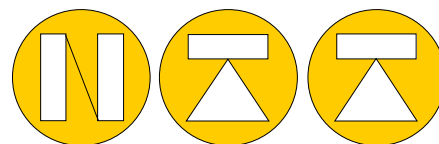
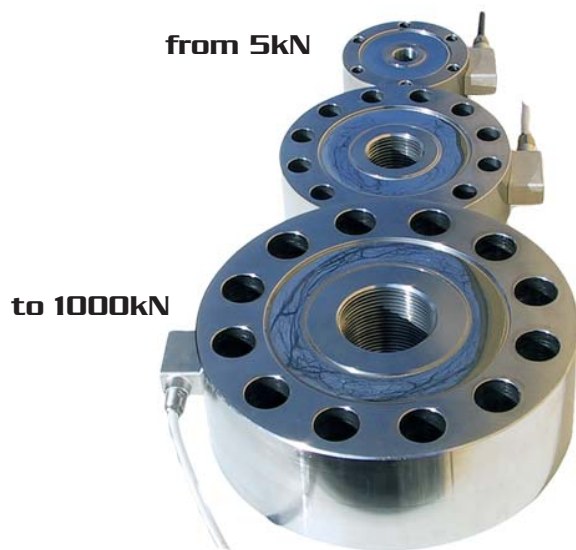


# CTC8-TM EN ISO376 Class 0.5



NORDIC TRANSDUCER



- Capacities from 5kN to 1 MN for use in:
- High accuracy test systems
  - Other force measuring applications
  - Classification according to : EN ISO376 or ASTM E74 on request.

- A traceable test certificate from approved test facilities can be supplied as options.
- EN ISO376 Class 0.5 from 5kN to 1000kN

The CTC4TM is a low profile hermetically sealed load cell made in stainless steel with IP67 protection . Their compact size makes them ideally suited for applications where space also is limited & where high side forces or dynamic loads are present. They can together with our high accuracy instruments be used as reference load cells for many types of factory verification.

## SPECIFICATIONS CTC8-TM:

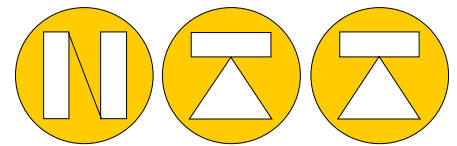
NOMINAL LOAD in KN	5-10-25-50-100-200-300-500-750-1000		
ACCURACY EN ISO 376	Class "0.5"	RELATIVE ERROR ( on reading *)	
Repeatability ( 0° - 120° - 240°)*	< +/- 0.075%		
Interpolation ( 2° equation )*	< +/- 0.035%		
Zero*	< +/- 0.020%		
Reversitivity *	< +/- 0.120%		
Non linearity F.S.	< +/- 0.03%		
Hysteresis F.S.	< +/- 0.03%		
Temp. effect on zero per 10°C	< +/- 0.028 %		
Temp. effect on span per 10°C	< +/- 0.024 %		
NOMINAL SENSITIVITY +/-0.1%	2mV/Volt		
Input/Output resistance	800/705 <sup>(1)</sup> Ohm	DISPLACEMENT N.LOAD mm	0.09, 0.17, 0.23
Resistance for 500-750-1000kN	430/352 <sup>(1)</sup> Ohm	NOMINAL TEMP. RANGE	-10/+40 °C
Zero balance	0.5% F.S	SERVICE TEMP. RANGE	-20/+70 °C
Supply voltage nominal 10V	2 - 15 Volt	STORAGE TEMP. RANGE	-20/+80 °C
MECHANICAL VALUES RELATED TO NOMINAL LOAD		PROTECTION CLASS	IP67
a) minimum load	0%	WEIGHT	2.45-5.80-16.5kg
b) service load	120%	CELL MATERIAL	Stainless IP67
c) max. permissible load	150%	CABLE LENGTH	5 meter
d) breaking load	>300%	FIXING SCREWS class 12.9	
e) max. side load	100%	Diameter M	M10 - M16 -M24
f) max. dynamic load	75%	Tightening torque	70 368 460

**Cable:** PVC 105°C Ø6.5mm with 4 tinned conductors Ø 0.35mm<sup>2</sup> and tinned shield Gravity acceleration  $g = 9.804537 \text{ m/s}^2$

\* min 1/10 of nominal load. (1) Related to 500-1000kN capacity

All specifications subject to change without notice

**NordiC Transducer** Als Oddevej 85 DK-9560 Hadsund Danmark  
Tel. +45 98 58 14 44 Fax. +45 98 58 18 66 e-mail: [ntf@ntf.dk](mailto:ntf@ntf.dk) WEB: [www.ntf.dk](http://www.ntf.dk)



**NORDIC TRANSDUCER**

Please notice following:

An EN10002-3 ( ISO 376 )load has to used as the intension for the utilization of such cells is = in a Tensile Material Testing machine !

If the way of compression and tension not can be follow as described in this regulation and if the job is something complete different, then the use of load cells after these regulations are not relevant, then a standard TC4 in ton can be used at a lower price.

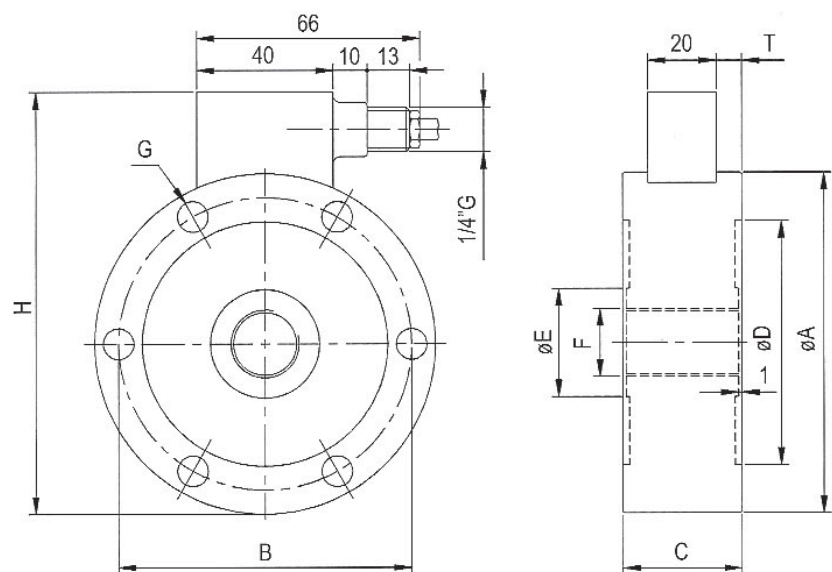
Or other load cell parameters must be taken into consideration ! In respect to the actual job.

**DIMENSIONS CTC8-TM**

Precision class 0,5 EN ISO 376

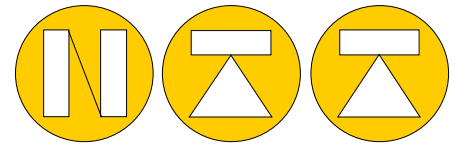
CODE	LOADS	øA	øB	C	øD	øE	øF	øG	Holes	H	T	kHz <sup>(2)</sup>
CTC8TM5KNI05	5kN	127	110	35	92	47	M30x2	10.5	8	149	7.5	2.3
CTC8TM10KNI05	10kN	127	110	35	92	47	M30x2	10.5	8	149	7.5	2.3
CTC8TM25KNI05	25kN	127	110	35	92	47	M30x2	10.5	8	149	7.5	4.8
CTC8TM50KNI05	50kN	127	110	35	92	47	M30x2	10.5	8	149	7.5	3.8
CTC8TM100KNI05	100kN	165	138	60	110	47	M30x2	10.5	8	188	7.5	22.1
CTC8TM200KNI05	200kN	165	138	60	110	62	M42x3	17.0	12	188	15	22.1
CTC8TM300KNI05	300kN	165	138	60	110	62	M42x3	17.0	12	188	15	22.1
CTC8TM500KNI05	500kN	230	185	80	147	62	M60x3	25.0	12	254	15	18.2
CTC8TM750KNI05	750kN	230	185	80	147	96	M60x3	25.0	12	254	30	18.2
CTC8TM1MNI05	1000kN	230	185	80	147	96	M60x3	25.0	12	254	30	18.2

<sup>(2)</sup> Natural frequency



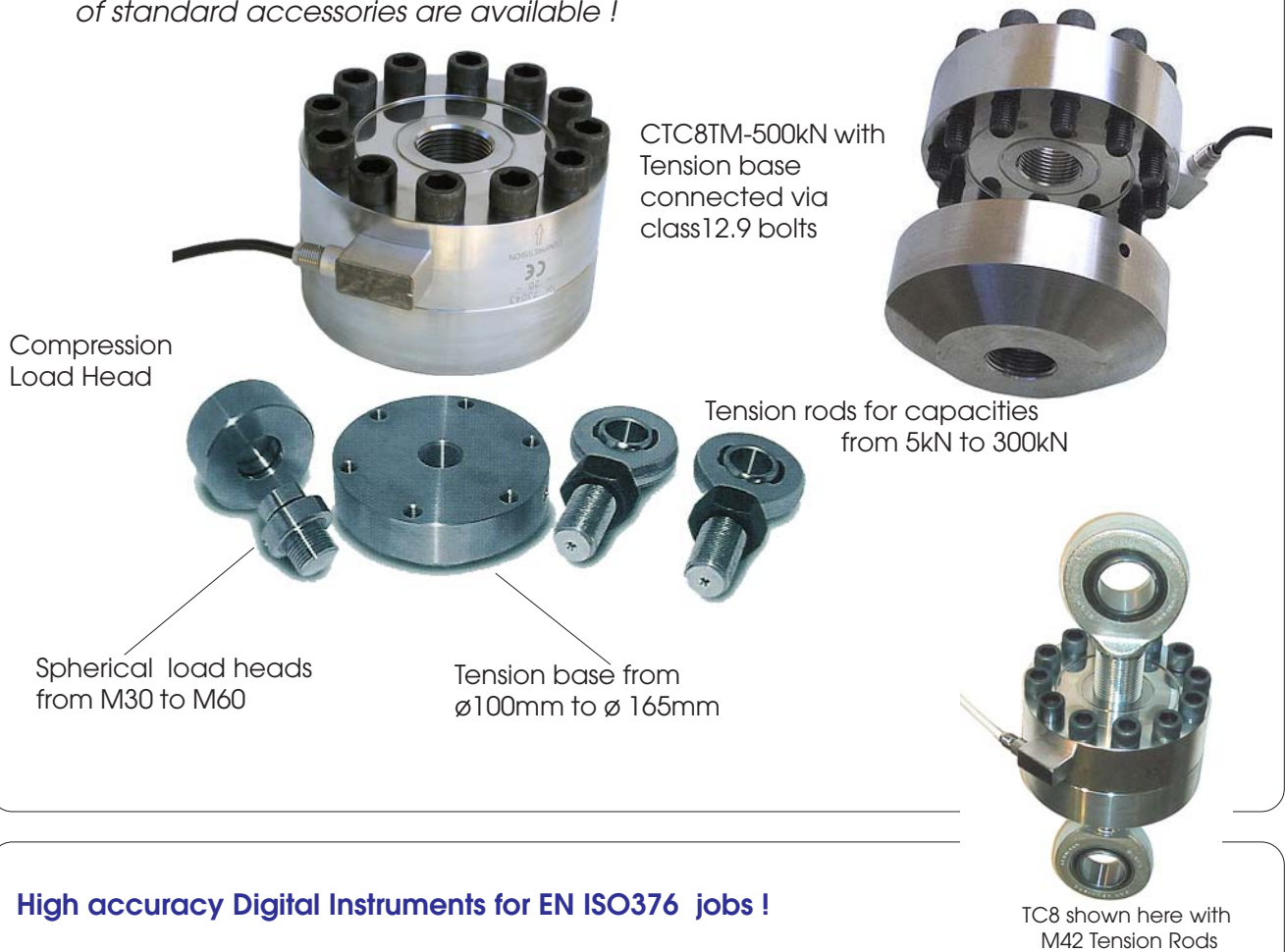
**LOAD CELL WIRING**

- INPUT+        RED
- INPUT-        BLACK
- OUTPUT+      WHITE
- OUTPUT-      YELLOW
- SHIELD: **CONNECTED TO LOAD CELL BODY**



## CTC8-TM accessories

For correct usage of CTC8TM load cells a range of standard accessories are available !



Compression Load Head

CTC8TM-500kN with Tension base connected via class 12.9 bolts

Tension rods for capacities from 5kN to 300kN

Spherical load heads from M30 to M60

Tension base from  $\varnothing 100\text{mm}$  to  $\varnothing 165\text{mm}$

TC8 shown here with M42 Tension Rods

## High accuracy Digital Instruments for EN ISO376 jobs !

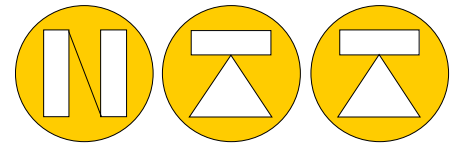


LDU69.1 high accuracy load cell digitizer for PC communication on RS422 / 485 / 232



MP10 with an indication of +/-200.000  
Can store a work with 10 different load cell parameters, as one at a time

Both instruments are extremely accurate and very stable for long time usage, with many standard facilities incorporated in both types.



**KAL** Load cell For class 0.5 and 00 up to 1000kN



**KAL** 500kN with  $\varnothing 80$ mm rod end bearing  
Please ask for separate brochure on KAL.