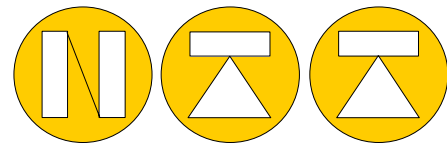


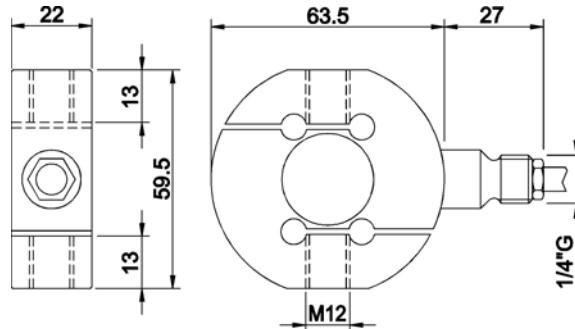
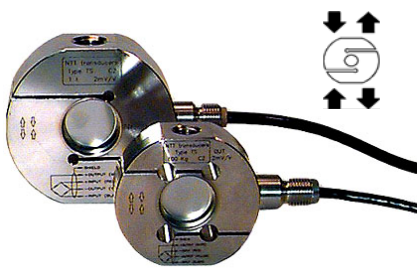
TS-TM Testing Machines Load cells

DATA SHEET: TSTM.24.11.00/rev.02



DYNAMOMETER

NORDIC TRANSDUCER



EN ISO 376
ASTM E74
Reference standard

Directive EMC
89/336/EEC 93/68/EEC
CE
EN50081-1 EN 50082-1

JTC
SIT certificate
on request

EN ISO 376

All Dimensions in mm

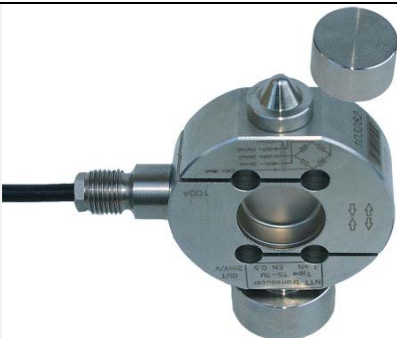

CODE (Class 00)	CODE (Class 0.5)	CODE (Class 1)	LOAD
CTSTM05KN005	CTSTM05KNI05	CTSTM05KNI15	0.5kN
CTSTM1KN005	CTSTM1KNI05	CTSTM1KNI15	1kN
CTSTM2KN005	CTSTM2KNI05	CTSTM2KNI15	2kN
CTSTM3KN005	CTSTM3KNI05	CTSTM3KNI15	3kN

High long term stability

Easy applications

Compact size

TECHNICAL DATA

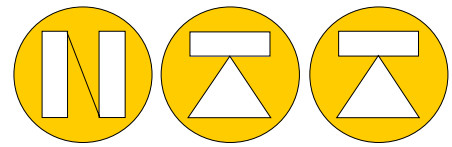
	Accuracy class: EN ISO 376		
	00	0.5	1
 <p>TS TM Compression</p>  <p>MP10 INDICATOR</p> <p>THE PERFECT INDICATOR FOR EN ISO376 TEST SYSTEMS</p>	NOMINAL LOAD ⁽¹⁾		
	RELATIVE ERROR (on reading)		
	a) repeatability 0°-120°-240° (b')		
	b) interpolation (fc)		
	c) reversitivity (u)		
	d) zero (fo)		
	LINEARITY		
	HYSTERESIS		
	TEMPERATURE EFFECT 10°C		
	a) on zero		
b) on sensitivity			
NOMINAL SENSITIVITY			
SENSIVITY TOLLERANCE			
INPUT RESISTANCE			
OUTPUT RESISTANCE			
INSULATION RESISTANCE			
ZERO BALANCE			
RECOMENDED SUPPLY VOLTAGE			
NOMINAL RANGE VOLTAGE			
MAXIMUM SUPPLY VOLTAGE			
MECHANICAL LIMIT VALUES RELATED TO NOMINAL LOAD :			
a) service load			
b) max permissible load			
c) breaking load			
d) maximum side load			
e) max permissible dynamic load			
DISPLACEMENT AT NOMINAL LOAD			
REFERENCE TEMPERATURE			
NOMINAL TEMPERATURE RANGE			
SERVICE TEMPERATURE RANGE			
STORAGE TEMPERATURE			
WEIGHT			
PROTECTION CLASS (DIN EN 60529)			
CELL MATERIAL			
CABLE LENGTH			

⁽¹⁾ kg calibration on request.

⁽²⁾ Percentual errors calculated to the value read, min. 1/ 10 of the nominal load. Classifications according ASTM E74 on request.

TS-TM Testing Machines Load cells

DATA SHEET: TSTM.24.11.00/rev.02



NORDIC TRANSDUCER

APPLICATIONS

TSTM.214.R0

COMPRESSION	TENSION
<p>WARNING:</p> <p>Be sure that the force generated during accessories assembly do not exceed nominal load Cable weight can influence the measurement, we therefore recommended to place it on the opposit site of the load.</p>	

CODE:		ACCESSORIES (optionals):
CTIC13	1	Load head.
CTS/18.M12	2	Spherical load head.
CBC/32.M12	3	Load basis.
CEM12L	4	Rod end Bearings

ELECTRICAL CONNECTIONS

PVC 105°C cable Ø3.8mm with 4 tinned conductors Ø0.35mm² and tinned shield.

Dynamometer	OUTPUT	CABLE	MIL7M (optional)
	EXCITATION+ EXCITATION - OUTPUT+ OUTPUT-	Red Black White Yellow Shield*	C B A D E

* not connected to the load cell body.

Nordisk Transducer Teknik Als Odde DK9560 Hadsund Denmark
 Tel. +45 98581444 Fax. +45 98581866
 E-mail: ntt@ntt.dk Internet: <http://www.ntt.dk>

Distributor:

In order to improve the technical performances of the product, the company reserves the right to make modifications without notice.