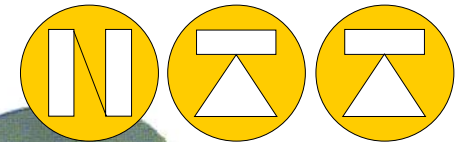


# C2S LOAD CELLS FOR SILO / HOPPER / BIGGER PLATFORM WEIGHING



**NORDIC TRANSDUCER**

In connection with mounting of load cells under silos / bins / hoppers are many compromises very often seen in the way these are mounted, this both with a economic aspect as a major parameter plus also often due to lack of knowledge how to do this correct. In the following are shown different ways of how to apply the force to a load cell with our comments to this



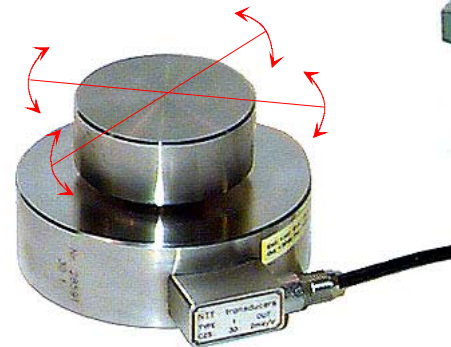
As the most simple solution we can supply a 14mm/20mm machined baseplate for correct mounting of the load cell and then a top part as shown, with an plane part going onto the load cell plus a +/- 1mm side way movement. ( if bigger movements than this is present don't use this type )

This type of solution ask for indeed a very good oplining in all directions, if this not is the case there will arise side forces to the cell as a result of only small temperature changes or other kind of mechanical movements, which will results in bad weighing results and in worst case damage of the load cell.



**C2S in 2 basis size both in stainless steel IP68 protection degree.**

Ø82mm x 44mm high in capacities from 100kg to 10t  
 Ø126mm x 54mm high in capacities 20t & 30t  
 Ø 165mm x 80mm high in 50t - 75t & 100 ton capacity.  
 The combined error for all types is 0.028% with repeatability within 0.011%

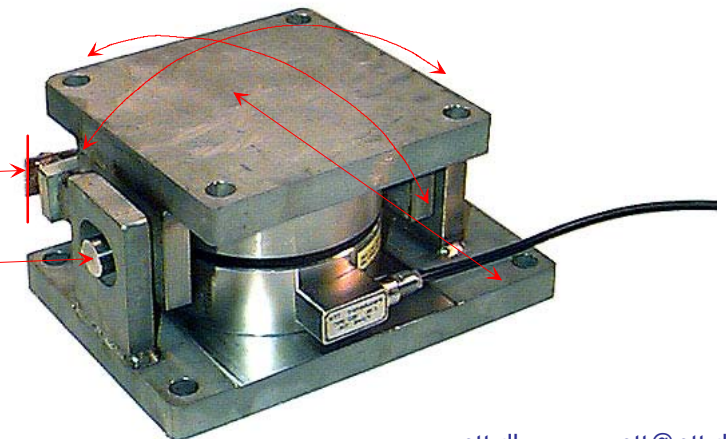
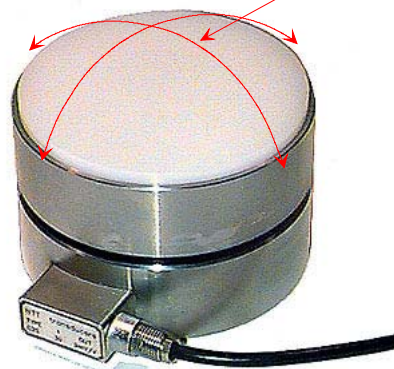


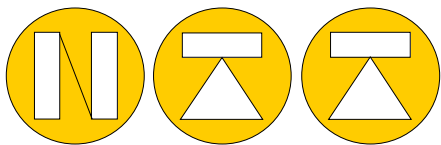
Low friction plate used for horizontal movements in UPC20S



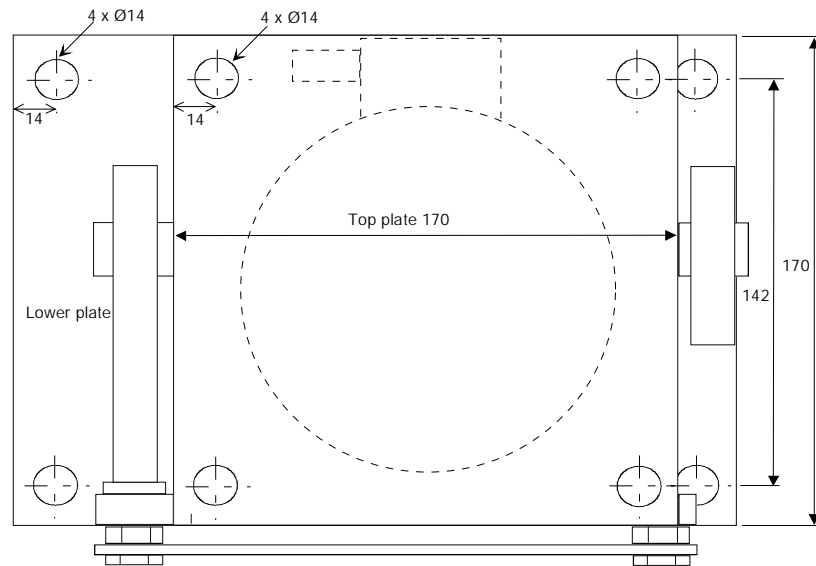
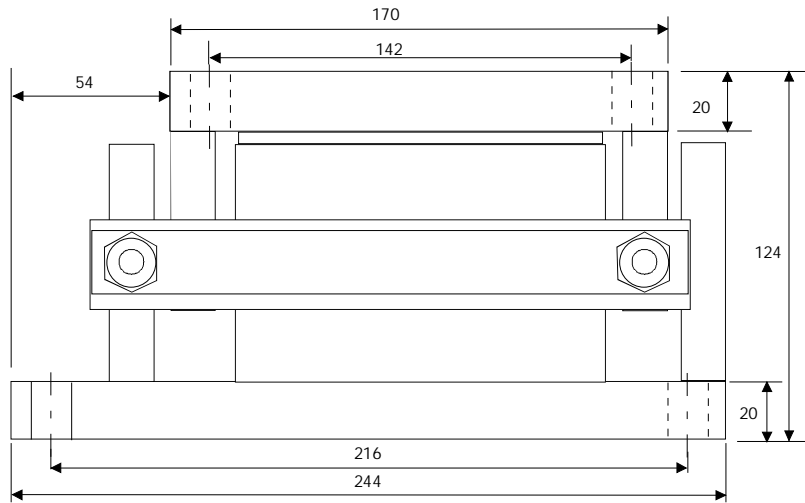
The most perfect solution is **UPC2S/UPC20S** mounting kit !. These mounts take care of all type of misalignment and do also compensate for horizontal movements do to temperature shift and other mechanical forces, where it is locked in one direction as shown here ( stop for high side forces ) and can move in the other 90° direction due to special sliding system. There is also a solid safety stop for upward movements.

There is 2 models:  
**UPC2S** for 100kg to 10t and **UPC20S** for 20 & 30t.





## NORDIC TRANSDUCER



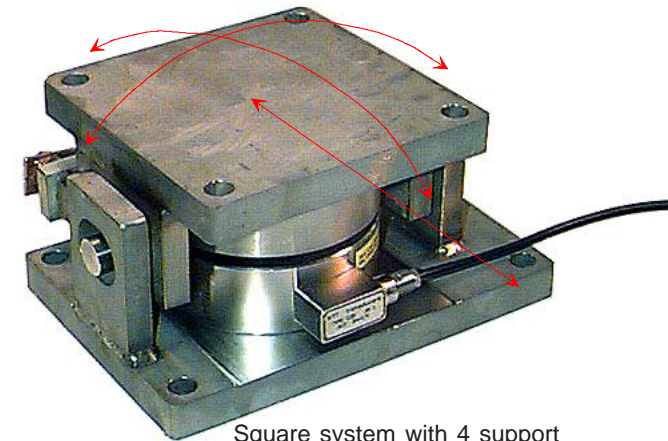
All dimensions in mm !

## UPC20S MULTI-LINE 20 & 30t WEIGHING UNIT

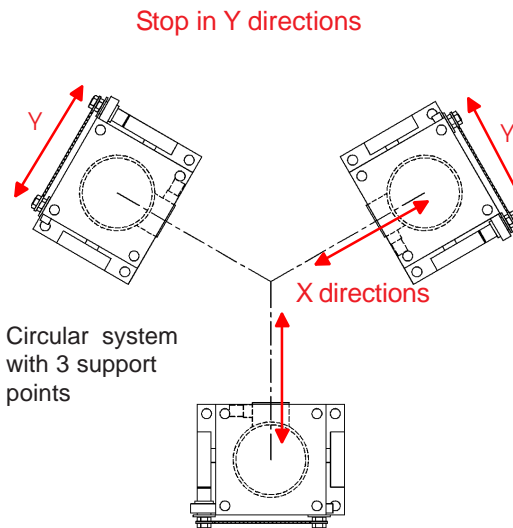
This **UPC20S** weighing unit is constructed throughout in ( AISI 304 ) stainless steel, and design to facilitate the installation of weighing and batching systems, in silos, bins and platform scales where 100% control are wanted over mechanical connection to the load cells.

This weighing unit is equipped with **Automatic Load Alignment** and **Transverse Shift Compensation** system to ensure **Excellent Measurement Performance** even in case of settling, thermal expansion, positioning error and structural deformations. Each unit comprises a **C2S-126 load cell**.

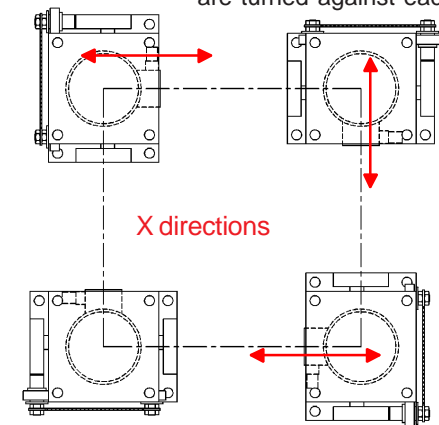
Material: Stainless steel	AISI 304
Weight ( with load cells )	20.8kg
Max. lateral shift ( X axis )	+/-10mm
Max. Inclination	+/-2.3°
Anti-tipping system	yes
Retainer tie-rod ( Y axis )	yes
Automatic load alignment	yes
Transverse shift compensation	yes



Square system with 4 support points, please notice how they are turned against each other



Circular system with 3 support points



## Nordisk Transducer Teknik

Als Odde, DK-9560 Hadsund Denmark

Tel.: +45 98581444, Fax.: +45 98581866  
E-mail: [ntt@ntt.dk](mailto:ntt@ntt.dk) WEB: <http://www.ntt.dk>