



Cable-Extension Motion Conversion Module

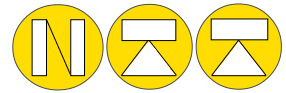
- ▼ Industrial Grade – Short to Medium Range
- ▼ Mates With Virtually Any Encoder
- ▼ Pre-mated to Encoder or Seperate Module

Specification Summary:

GENERAL

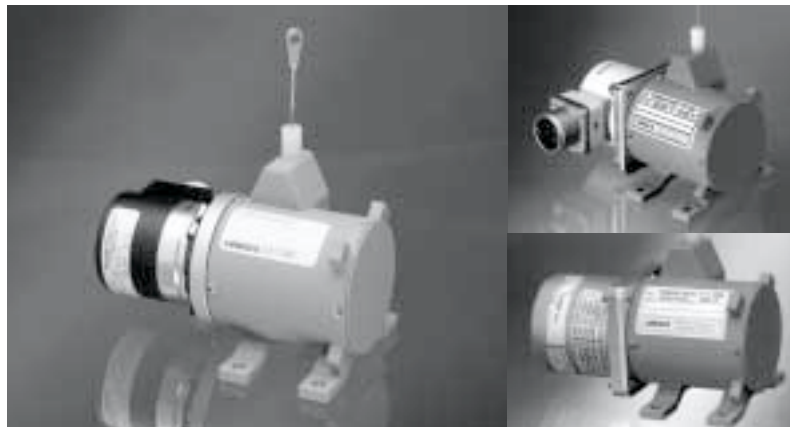
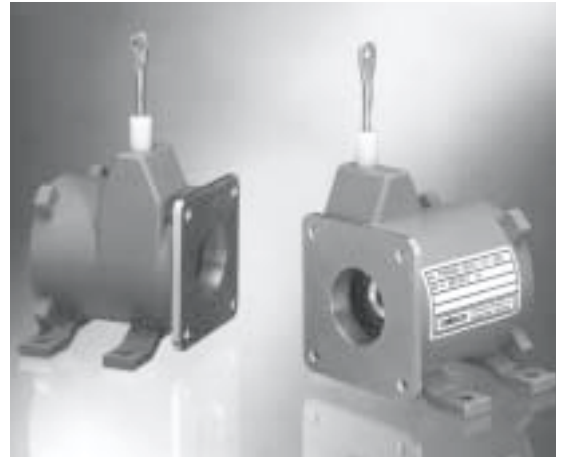
Full Stroke Range: 0-25, 0-50 in., 0-625, 0-1250 mm, see ① next page
 Motion Conversion Ratio:

- English Ranges 5 inches per turn, see ④
- Metric Ranges 125 mm per turn, see ⑤
- Accuracy the lesser of 0.02% full stroke or 0.04% of measurement range
- Measuring Cable stainless steel or thermoplastic rope, see ⑥
- Module Material aluminum and stainless steel available, see ③
- Maximum Allowable Rotational Sensor Torque 1.0 in-lbs.
- Weight, Aluminum Enclosure 1.5kg max.
- Weight, Stainless Steel Enclosure 3kg max.



CE

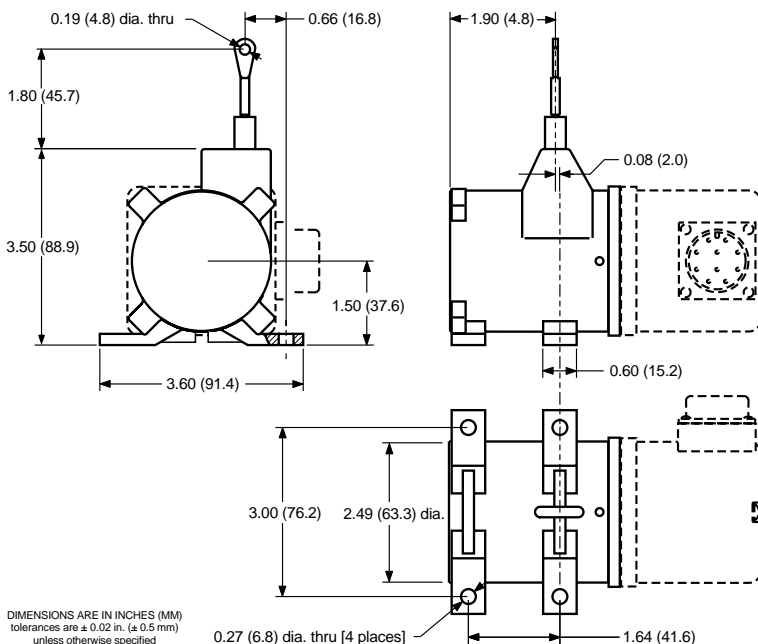
PT8600

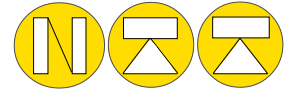


Our unique linear-to-rotational, industrial-grade motion conversion module mates to virtually any encoder, giving you a cost-effective linear position measurement solution that precisely fits your requirements. The PT8600 takes just minutes to install, fits easily into tight areas, does not require perfectly parallel alignment, and provides reliable and precise position measurements without needing periodic adjustments.

For any high resolution or absolute encoder requirement, the PT8600 delivers the ultimate in flexibility. As a BEI, Dynapar and EPC distributor, Celesco can deliver a complete solution with the PT8600 pre-mated and calibrated to the encoder.

Supplying your own encoder? We also sell the PT8600 separately with all of the necessary tools and attachment hardware included!





PT8600 • Motion Conversion Module • Mates With Virtually Any Encoder To Fit Your Specifications

▼ Ordering Information

Model Number:

PT8600- _____ **1** _____
order code: R A B C D E

Full Stroke Range:

Ⓜ order code:	0030	0060	0625	1250
① full stroke range, min:	30 in.	60 in.	625 mm	1250 mm
accuracy (% of f.s.):	0.04 %	0.04%	0.04%	0.04%
maximum cable acceleration:	5 G's	5 G's	5 G's	5 G's
② std. cable tension (±20%):	12 oz.	12 oz.	15 oz.	15 oz.

Enclosure Material & Measuring Cable Tension:

Ⓜ order code:	1	2	3	4
③ enclosure material:	powder-painted aluminum		303 stainless steel	
cable tension* multiplier:	1x	3x	1x	3x

*note: refer to ② above

Motion Conversion Ratio & Measuring Cable:

Ⓜ order code:	1	2*	3*
④ conversion ratio, english ranges:	1 turn = 5.000 (±0.0094) in.	1 turn = 5.034 (±0.0094) in.	1 turn = 5.088 (±0.0094) in.
⑤ conversion ratio, metric ranges:	1 turn = 125.001 (±0.2394) mm	1 turn = 125.879 (±0.2394) mm	1 turn = 127.075 (±0.2394) mm
⑥ measuring cable construction:	nylon-coated stainless steel	stainless steel rope	thermoplastic

notes: *available in all ranges

**30-inch and 625-mm ranges only

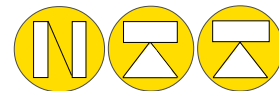
***30-inch and 625-mm ranges only

Cable Guide Options:

Ⓜ order code:	none	SS	BL*	BR
	standard nylon cable guide	stainless steel cable guide	polyurethane cable bellows	integral cable brush

note: *will limit measurement range to 25 inches (635 mm) maximum





PT8600 • Motion Conversion Module • Mates With Virtually Any Encoder To Fit Your Specifications

Rotational Sensors:

i *order code:* _____ *partial listing only--if you don't see the sensor you are looking for please contact Celesco*

Incremental Encoders: **AB-845H-DZ** Allen Bradley, Model 845 H, square flange, 3/8" shaft
BEI-H20DB-37 BEI, Model H20, square flange, 3/8" shaft, pilot
BEI-H25D BEI, Model H25, square flange
DRC-25D Dynamics Research, Model 25D, square flange
DYN-625-0 Dynapar, Model 625, square flange
EPC-702-20-G EPC, Model 702, square flange, 3/8"shaft, pilot
EPC-702-01-H EPC, Model 702, hollow shaft, 1/4" bore, flex mnt.

Absolute Encoders: **BEI-R25** BEI, Model R25, square flange
CO-CP850-S Computer Optical, servo mount, 3/8" shaft
DYN-A25 Dynapar, Model A25, square flange
FR-AWC58-F FRABA, model AWC58, clamp flange, 10mm shaft
IVO-GA240 IVO Industries, model GA240, servo mount

Explosion Proof: **JC-1010** Jordan Controls, Position Transmitter-PT1010

Resolvers: **NEO-2510** Neotech, Model 2510, servo mount
MIC-50 Micron Instrument Corporation, Model 50 series
CC-HR90 Computer Conversions, Model HR90

▼ Sample Model Number

PT8600- 0025 - 1 1 1 - BR - BEI-H25D
order code: i i i i i

Specifications: Full Stroke Range: 25 inches
Measuring Cable: 0.036-in dia. stainless steel rope, 14 oz. cable tension
Enclosure: aluminum
Cable Exit Option: Cable Brush
Mating Sensor: BEI, Model H25D Incremental Encoder, 2.5" square flange, 3/8" shaft

▼ Placing an Order

Purchasing PT8600 alone? Please fax complete rotational sensor information, including outline drawing and model number specifications. Celesco must be sure of sensor compatibility before your order will be accepted. The PT8600 comes with all the tools and hardware you'll need to attach the sensor to the module.

Purchasing PT8600 with rotational sensor? Please contact Celesco Application Engineers for complete ordering information and pricing.

celesco

Nordisk Transducer Teknik • Als Odde DK9560 Hadsund Denmark
tel.: +4598581444 • fax: +4598581866 • www.ntt.dk • kd@ntt.dk